

## Parasol unit

foundation for contemporary art 14 Wharf Road

London N1 7RW / T +44 (0) 20 7490 7373 / F +44 (0) 20 7490 7775

www.parasol-unit.org / info@parasol-unit.org

## Press Release

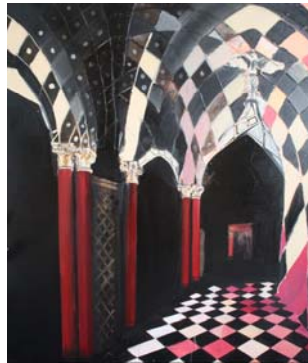
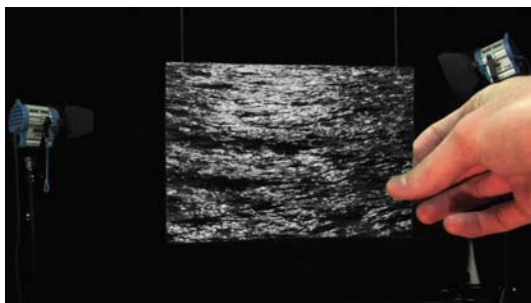
### EXPOSURE 11 Award

**Jack Friswell, Kate Shepherd and Rebecca Turner**

**Wimbledon College of Art**

13 September – 16 October, 2011

(Preview: 12 September, 6:30–9 p.m.)



Images left to right: **Jack Friswell**, *Proscenium*, 2011, HD video projection, 3 minutes 45 seconds. **Kate Shepherd**, *Pop goes the weasel*, 2011, 124 x 144 cm, mixed media. **Rebecca Turner**, *Dumbstruck*, 2011, paper pulp, mixed media. All images copyright © 2011 the artists and Parasol unit.

Parasol unit foundation for contemporary art is delighted to present the winners of the **EXPOSURE 11 Award**, **Jack Friswell**, **Kate Shepherd** and **Rebecca Turner**, all graduates of Wimbledon College of Art. Already in its third year, the **EXPOSURE Award** has gained ever increasing recognition and proved to be of great benefit to previous winners by giving the graduates from a UK art school an opportunity to exhibit work in a professional context. Showing alongside **Yang Fudong**, the main exhibition at Parasol unit, and coinciding with the Frieze Art Fair, their work will benefit from exposure to an international audience. For the 2011 EXPOSURE 11 Award, Parasol unit has collaborated with the **Wimbledon College of Art**.

**Jack Friswell** (BA Fine Art: Print and Time-based Media) explores notions of the cinematic and the artefact, working somewhere between documenting and oddity. Influenced by ethnographical studies and archetypes of architecture and landscape, he is interested in the anachronism of the projection screen as an object of visual and critical enquiry. Through introspective study, his images become the catalyst for critique via the geographical displacement of the screen and its construction.

**Kate Shepherd** (BA Fine Art: Painting) in her three paintings *Hadrian*, 2011, *Claudius*, 2011, and *Pop goes the weasel*, 2011 addresses the politics of place along with the social and historical context of the urban environment. The work reflects her concern with the effect a city could have on memory, while using layering and texture to mimic the archaeological levels of the cityscape. Structural lines within the works move the eye between invented and existent space.

**Rebecca Turner** (BA Fine Art: Sculpture) explores the relationship between space and what occupies it, and is particularly interested in the disruption of patterns of movement. Her large astronomical forms which she associates in unlikely ways to the surrounding objects and architecture can be somewhat baffling. Like a mysterious or unworldly invasion these often spherical anomalies, while playing with gravitational limitations, interrupt the ease of an apparently predetermined trajectory. The viewer must negotiate their

unavoidable presence wherever they are clinging, anchored like some parasitic creature feeding off our architecture.

The **judging panel** for the 2011 EXPOSURE Award comprised of Katie Pratt, Painting Pathway Leader; Lois Rowe, Print and Time-based Media Pathway Leader; Sarah Woodfine, Sculpture Pathway Leader; and Ziba Ardalan, Director/Curator of Parasol unit foundation for contemporary art.

### **About EXPOSURE**

Awarded annually, EXPOSURE celebrates the development of young art school graduates and gives them the opportunity to show their work to an international audience, many of whom come to London for the Frieze Art Fair. Each year a different art school is invited to present a shortlist of graduates to Parasol unit. After the initial selection, one or more graduates are awarded the opportunity to stage an installation in the Parasol unit gallery for one month. Winners of **EXPOSURE 09** were Sonny Sanjay Vadgama, Mark Dennis and Chris Gomersall. Winners of **EXPOSURE 10** were Leah Capaldi, Kate Liston and Lea Provenzano.

The EXPOSURE 11 Award is kindly supported by Arts Council England.



### **Visitor information**

Gallery opening hours: Monday: by prior arrangement; Tuesday–Saturday, 10 am–6 pm; Sunday, 12–5 pm  
Admission: Free

Extended opening hours during Frieze week:

Monday 10 October, 10 am–6 pm

Saturday 15 October, 10 am–9 pm

### **Directions:**

Tube: Old Street and Angel

Bus: 43, 205 and 214 via City Road

### **Note to editors**

Please contact Anna Lehbruck on 020 7490 7373 or [anna@parasol-unit.org](mailto:anna@parasol-unit.org) for more information.

Founded in December 2004, Parasol unit foundation for contemporary art is a registered educational charity in England and Wales that operates purely for the public benefit. Central to the Parasol unit philosophy is a total commitment to artists and their creative endeavour, an attitude which leads to a singular relationship developing between each exhibiting artist and the foundation.

Every year the foundation organises four challenging and thought-provoking exhibitions in various media and also sets up a variety of other artistic projects. Each exhibition is accompanied by a publication and related educational events. The foundation does not bear the founder's name, and its exhibitions are not derived from the founder's collection. Admission to exhibitions is free of charge.

Parasol unit operates like publicly funded institutions in London. Currently about 60% of the funding is provided by the founder and 40% through a combination of charitable organisations, private donations, the sale of merchandise and Gift Aid. The exhibition space has been put at the disposal of the foundation free of charge by the founder. Thanks to this new model between private funding and public support one of London's most vibrant contemporary art spaces has come to exist. We thank you for your visit and support.

For more information go to [www.parasol-unit.org](http://www.parasol-unit.org)

Company registration: 05299582/ Registered charity number: 1107425