

Parasol unit

foundation for contemporary art 14 Wharf Road

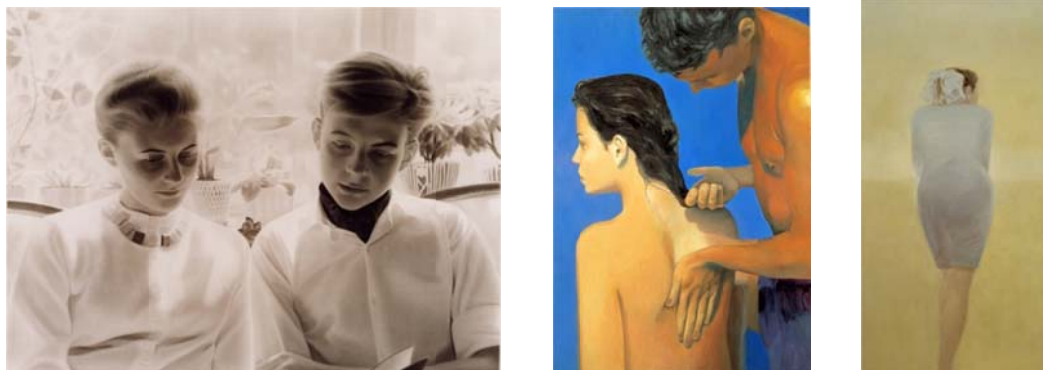
London N1 7RW / T +44 (0)20 7490 7373 / F +44 (0)20 7490 7775

www.parasol-unit.org / anna@parasol-unit.org

Press Release

Time and Memory: Cecilia Edefalk & Gunnel Wählstrand

23 November 2011–12 February 2012 (Preview 22 November 2011, 6:30–9 p.m.)



Left: Gunnel Wählstrand, *By the Window*, 2003–2004, ink-wash on paper, 151 x 198 cm, The Michael Storåkers Collection. *Centre:* Cecilia Edefalk, *Another Movement*, 1990, Oil on canvas, 192 x 135 cm, Private Collection. *Right:* Cecilia Edefalk, *CU*, 1988, oil on linen, 192 x 96 cm, Private Collection, Photo Carl Henrik Tillberg. All images courtesy of the artists.

On 22 November 2011, Parasol unit will preview an exhibition dedicated to two contemporary Swedish artists, Cecilia Edefalk and Gunnel Wählstrand. Since the late 1980s, Cecilia Edefalk has been one of Sweden's leading and most sought-after artists both at home in Sweden and abroad. Following Gunnel Wählstrand's acclaimed graduation exhibition at the Royal University College of Fine Arts, Stockholm, in 2003, her work has featured in numerous exhibitions in Europe and overseas.

Cecilia Edefalk's paintings emerge as a network of repetitions, reproductions and historical memory. Often reflecting her own process-oriented practice, Edefalk's scenarios carve out haunting exchanges between past and present, in which unexpected connections unfold with sudden clarity. Often painted in series, Edefalk's paintings allude to and intensify one another. This relational nature of the artist's work has required the physical installation of her paintings in an exhibition space to become an integral part of her methodology and practice. She uses mirror effects, displays paintings at 90-degree angles and turns canvasses upside-down to establish a carefully choreographed arrangement for viewing. The interaction between the works lends a quality of performance to her exhibitions.

Among Edefalk's solo exhibitions are: Cecilia Edefalk, Moderna Museet, Stockholm, Sweden, 1999; and Focus: Cecilia Edefalk, Art Institute, Chicago, USA, 2006.

Cecilia Edefalk (1954–) lives and works in Stockholm, Sweden.

Memory is at the core of Gunnel Wählstrand's work as well. The artist's photo-realistic black-ink drawings are a deeply private and meticulously reconstructed documentation of her personal history. Having shown a series of large-scale ink drawings that re-created photographs from her father's early childhood in her 2003 graduation exhibition at the Royal University College of Fine Arts in Stockholm, Wählstrand continues to investigate other motifs from her family photograph albums. The precise and demanding work of depicting these documents allows the artist to physically and psychologically approach a personal history that she did not experience, yet is living its consequences. Wählstrand's father died when she was one year old. 'Mainly, I see photographs as a proof of existence,' she explains. As photographs these images are not particularly revealing, but as imposing monochromatic drawings they gain a newfound immediacy, importance and haunting resonance.

Wählstrand's recent exhibitions include: *Nordic-by-New York*, ASF Scandinavia House, New York, USA, 2011; *Gunnel Wählstrand*, Andréhn-Schiptjenko, Stockholm, Sweden, 2009; and *Gunnel Wählstrand: Paintings from the Collection*, Magasin 3, Stockholm, Sweden, 2006. Gunnel Wählstrand (1974-) lives and works in Stockholm, Sweden.

The exhibition is kindly supported by:

Barbro Osher Pro Suecia Foundation; Pontus Bonnier, Stockholm; Caroline and Per Landin; The Swedish Embassy

VISITOR INFORMATION

Gallery opening hours

Monday by prior arrangement. Tuesday–Saturday, 10 a.m.–6 p.m. Sunday, 12–5 p.m.

Admission: Free

Directions

Tube: Old Street and Angel

Buses: 43, 205 and 214 via City Road

Note to editors

Founded in December 2004, Parasol unit foundation for contemporary art is an educational charity registered in England and Wales. It operates purely for the public benefit. Central to the Parasol unit philosophy is a total commitment to artists and their creative endeavour, an attitude which leads to a singular relationship developing between each exhibiting artist and the foundation.

Every year the foundation organises four challenging and thought-provoking exhibitions in a variety of media and also sets up other artistic projects. Each gallery exhibition is accompanied by a publication and related educational events. The foundation does not bear the founder's name, and its exhibitions are not derived from the founder's own collection. Admission to all exhibitions is free of charge.

Parasol unit operates like publicly funded institutions in London. Currently, about 60% of its funding is provided by the founder and 40% through a combination of charitable organisations, private donations, the sale of merchandise, and Gift Aid. The exhibition space is put at the disposal of the foundation free of charge by the founder. Thanks to this new model between private funding and public support one of London's most vibrant contemporary art spaces has come to exist. We thank you for your visit and support.

For more information, please contact Anna Lehmbruck on 020 7490 7373, at anna@parasol-unit.org, or go to www.parasol-unit.org

Company registration: 05299582 / Registered charity number: 1107425